



Support Documentf: KB-954RAI

Applies to: Windows PC computers only

Cloud customer: Applies to Casa Del Alferero casacda cloud drive users only.

How to setup your RAI Cloud Drive settings

Install the RAI software. Double click on the file, clouddrive_1.6.4.518.exe. Follow the wizard to install it by default on your windows computer.

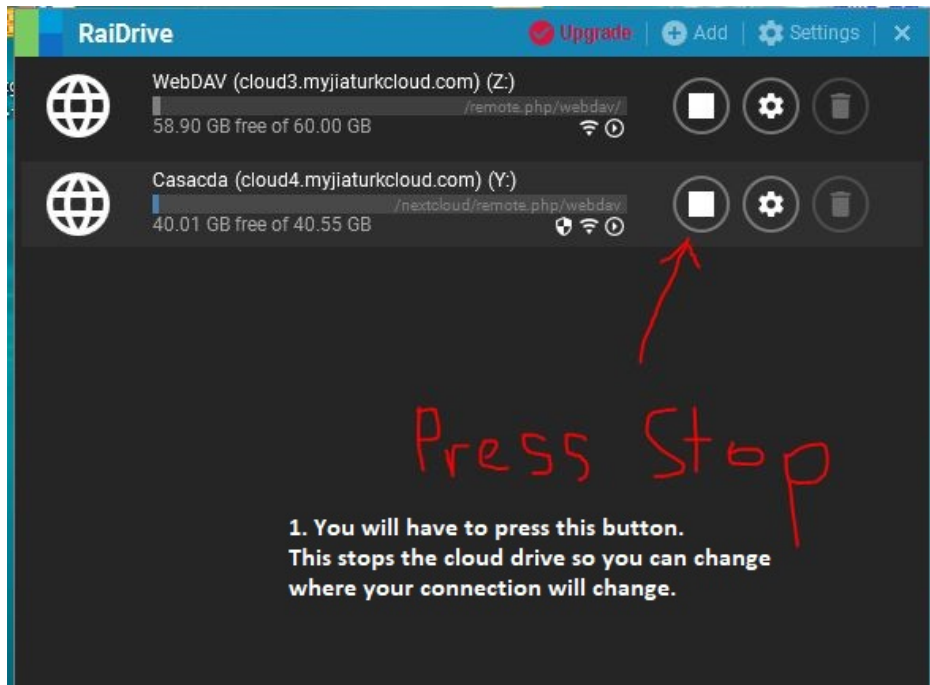
As of June 2021, the link to download the cloud software agent is
https://www.jiaturk.net/downloads/clouddrive_1.6.4.518.exe

RAI Drive software is the cloud drive agent that talks to our cloud and provides a secured connection to your comppany data in the cloud and sets up a network drive to access your company data but inside your windows computer desktop or "My Computer"

1. Open RAIDrive software on your computer. You will have click on this icon.

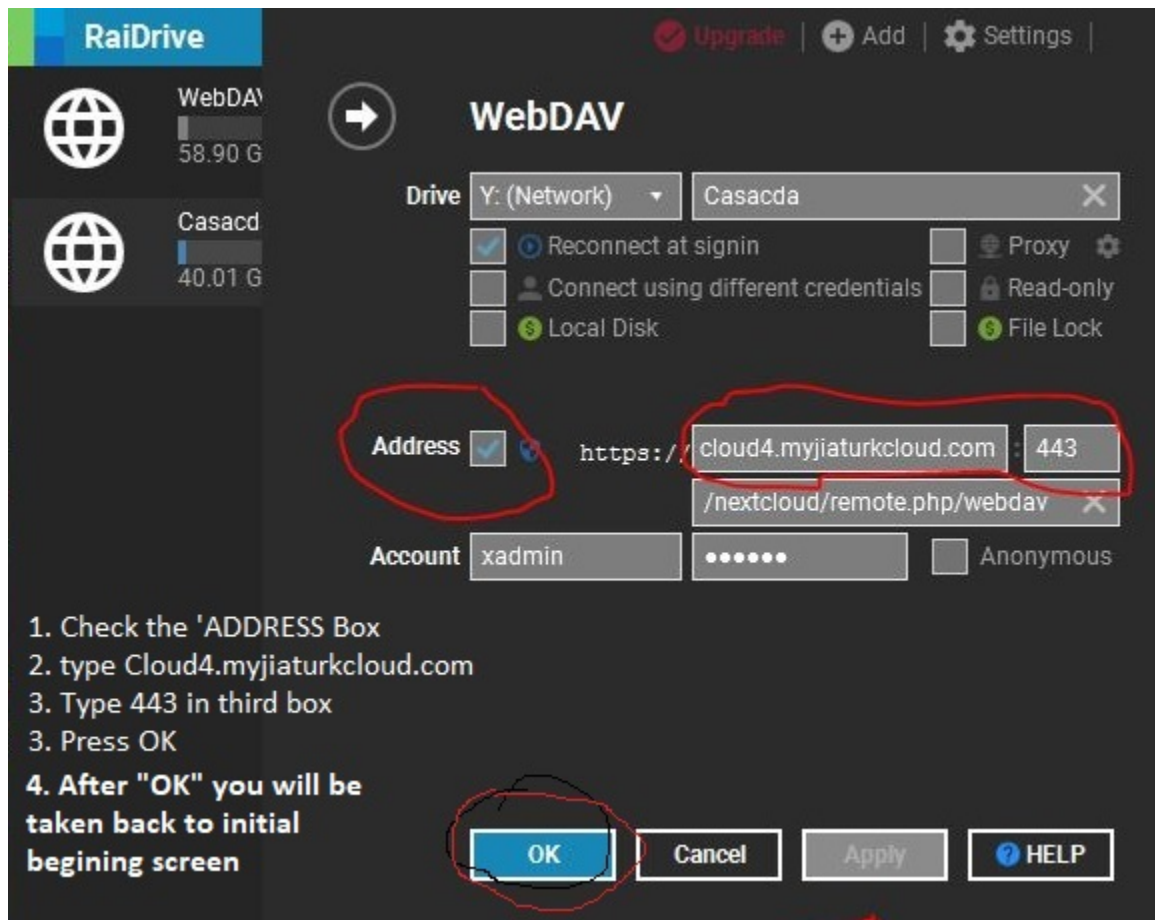


2. When you click on it, you get this window shown below. Next, you will need to stop your cloud drive services. Read instruction information in picture below to stop your cloud drive services first.



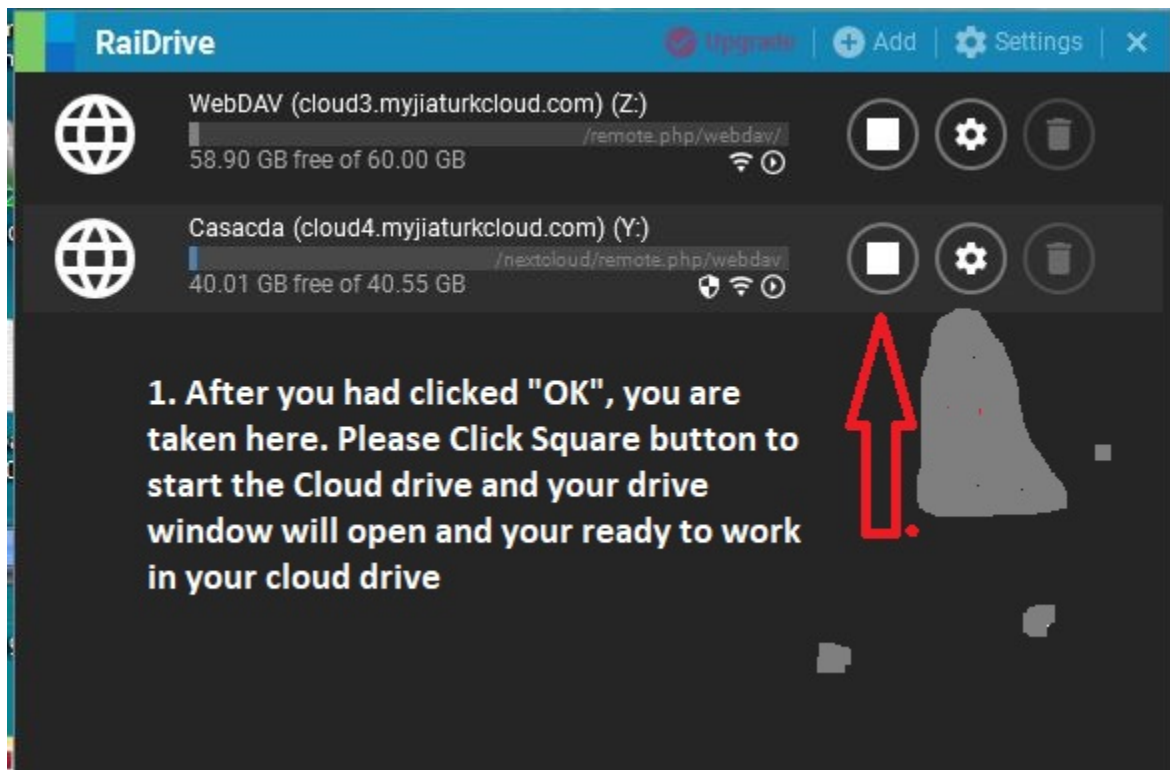
3. Then this window below will open:

Read directions in this picture. You're going to check mark the Address box, type the address after https: as in this picture. Type in the third box number 443. When you are finish, simply press on the Okay button. Your cloud drive should open in a separate window.



When you press "OK" button, the window below opens

Or you may be taken to the first picture from this document. Here you would simply "start" the cloud drives again.



Your cloud drives should open. In addition, you manually go to the cloud website and download the same files going to a website in our cloud.

Cloud website: Casacda.org data is also located at <https://cloud4.myjiaturkcloud.com/nextcloud>. You will be required to login. The same login listed in your RAI Drive software is used to login.

Should you still require assistance, please open a ticket at <http://support.jiaturk.com>

These instructions listed on this document only apply to users of Casa Del Alfarero.